

40Z-METER TRUCK-MOUNTED SPECIFICATIONS

Length	40' 3"	(12.27m)
Width	8' 2"	(2.50m)
Height	12' 11"	(3.94m)
Wheelbase	215"	(5,461mm)
Front axle weight	18,760 lbs	(8,510kg)
Rear axle weight	38,470 lbs	(17,450kg)
Approx. total weight	57,230 lbs	(25,960kg)

Based on Model MACK MRU 613 with .16H pump cell.
Weights are approximate and include pump, boom, truck, driver and some fuel.
Dimensions will vary with different truck makes, models and specifications.

BOOM SPECIFICATIONS | MULTI-Z DESIGN

Height & Reach

Vertical reach	128' 3"	(39.10m)
Horizontal reach	115' 1"	(35.10m)
Reach from front of truck*	107' 7"	(32.80m)
Reach depth	82' 0"	(25.00m)
Unfolding height	30' 10"	(9.40m)

4-Section Boom

1st section articulation	102°
2nd section articulation	180°
3rd section articulation	245°
4th section articulation	233°
1st section length	30' 8" (9.40m)
2nd section length	27' 6" (8.40m)
3rd section length	28' 5" (8.70m)
4th section length	28' 3" (8.60m)

General Specs

Pipeline Size (ID) metric ends	4.6"	(117mm)
Rotation	365°	
End hose — length	10' 0"	(3.00m)
End hose — diameter	4.5"	(115mm)
Outrigger spread L - R — front	20' 8"	(6.30m)
hydraulically extend out & down		
Outrigger spread L - R — rear	21' 3"	(6.50m)
hydraulically swing out & extend down		

PUMP SPECIFICATIONS

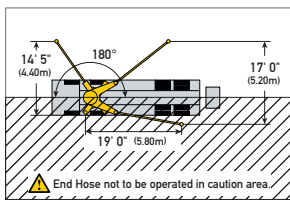
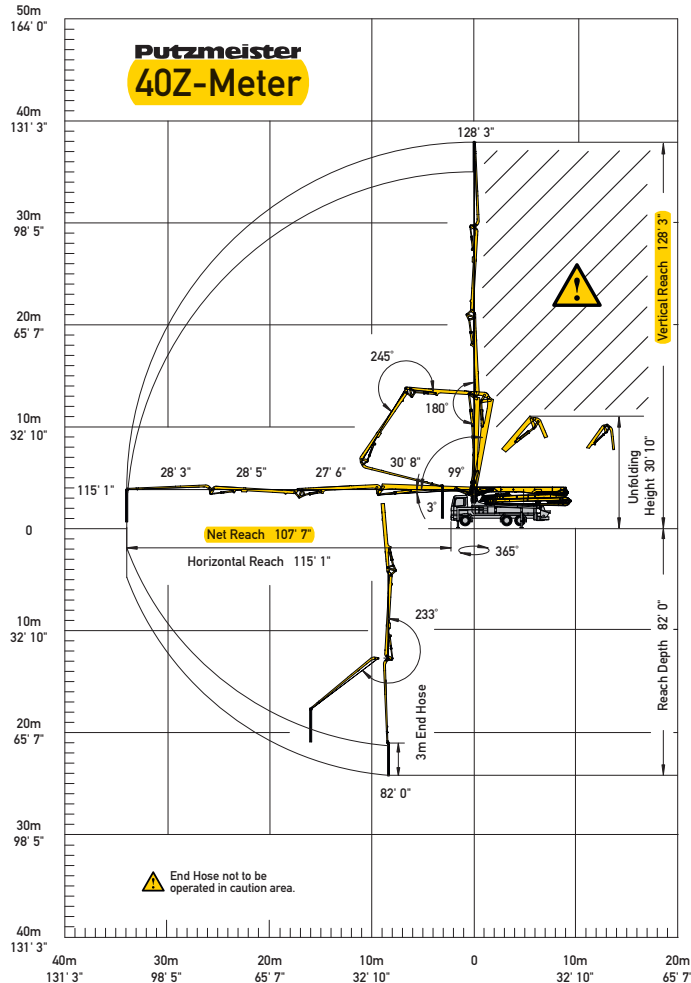
40Z.12H

40Z.16H

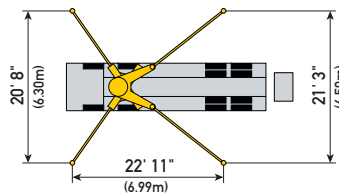
Output — rod side	144 yd ³ /hr (110m ³ /hr)	210 yd ³ /hr (160m ³ /hr)
— piston side	97 yd ³ /hr (74m ³ /hr)	141 yd ³ /hr (108m ³ /hr)
Pressure — rod side	1,233 psi (85 bar)	1,233 psi (85 bar)
— piston side	1,885 psi (130 bar)*	1,885 psi (130 bar)*
Material cylinder diameter	9" (230mm)	9" (230mm)
Stroke length	83" (2,100mm)	83" (2,100mm)
Maximum strokes per minute — rod side	21	31
— piston side	14	21
Volume control	0-Full	0-Full
Vibrator	Standard	Standard
Hard-chromed material cylinders	Standard	Standard
Hydraulic system	Free Flow	Free Flow
Hydraulic system pressure	5,075 psi (350 bar)	5,075 psi (350 bar)
Differential cylinder diameter	5.5" (140mm)	5.5" (140mm)
Rod diameter	3.1" (80mm)	3.1" (80mm)
Maximum size aggregate	2.5" (63mm)	2.5" (63mm)
Water tank— pedestal	185 gal (700L)	185 gal (700L)

Maximum theoretical values listed.

- * Applies to units mounted on PMA stock truck — MACK MRU 613
- Standard delivery line system rated at max line pressure of 1,233 psi (85 bar)
- Ergonic Pump System (EPS) is standard.

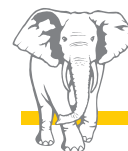
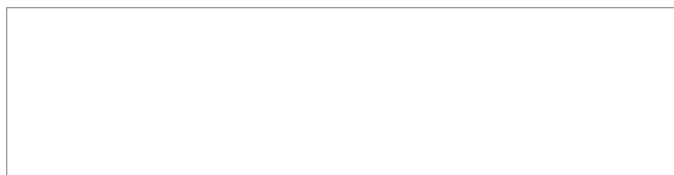


With One-Sided Support (OSS) 180°



Photos and drawings are for illustrative purposes only.

Authorized Distributor



Putzmeister

Putzmeister America, Inc. Phone (262) 886-3200
1733 90th Street Toll-free (800) 884-7210
Sturtevant, WI 53177 USA Fax (262) 884-6338